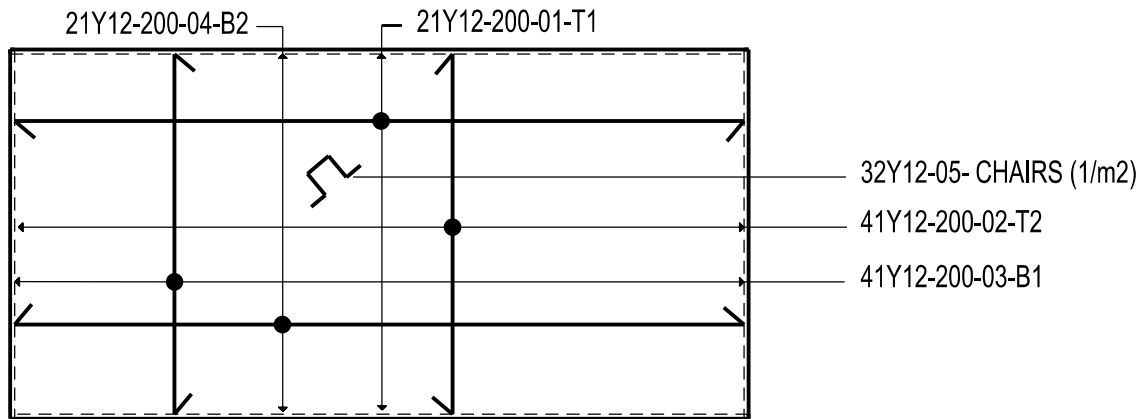


SLAB DETAIL

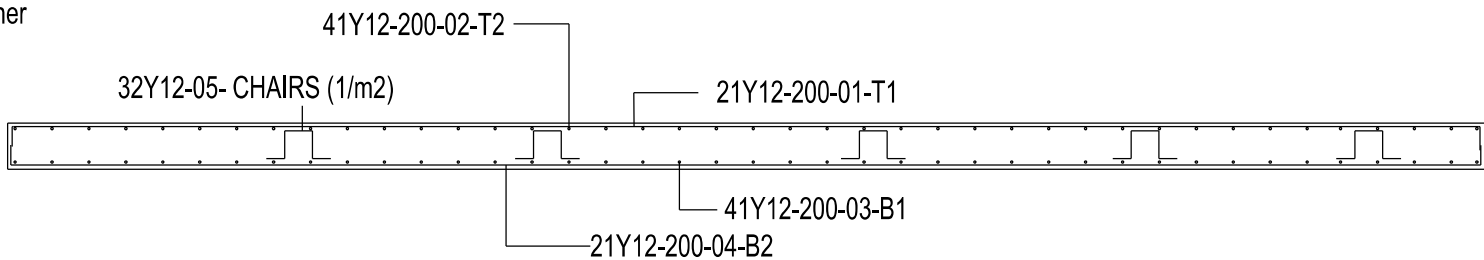


REINFORCEMENT  
DETAIL

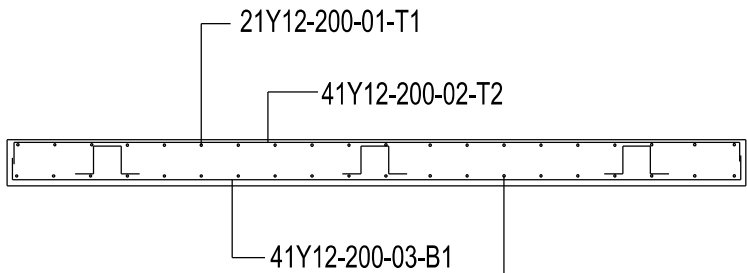
No. of Bars	DIA	Length	Mark	SC	A	B	C	D
21	12	8100	01	38	100	7900	100	
41	12	4100	02	38	100	3900	100	
41	12	4100	03	38	100	3900	100	
21	12	8100	04	38	100	7900	100	
32	12	650	05	83	200	150	100	100

Total Mass = 22.5 kg

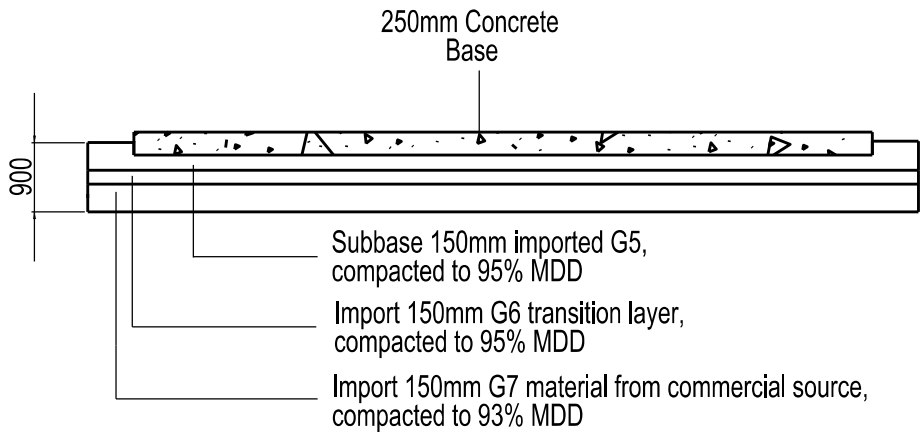
BENDING  
SCHEDULE



SECTION A-A  
SCALE 1:50




SECTION B-B  
SCALE 1:50



SECTION A-A

NOTES

1. CONCRETE STRENGTH AT 28 DAYS/STONESIZE :  
BLINDING = 15/19  
FOUNDATION = 25/19  
SLUMP VALUE 75mm( 25mm)
2. MIN. COVER TO REINFORCEMENT TO  
BE 50mm +/-
3. FORMWORK TO EXTEND AT LEAST 150mm  
BELOW GROUND LEVEL
4. ALL TOP EDGES TO HAVE 20 x 20 CHAMFER
5. ALL WORK TO BE IN ACCORDANCE WITH SANS  
1200 SERIES
6. THESE FOUNDATIONS HAVE BEEN DESIGNED  
TO FOUND ON COMPETENT FOUNDING MATERIAL.  
IN ALL CASES COMPETENCY MUST BE ESTABLISHED BY  
A QUALIFIED GEOTECHNICAL ENGINEER
7. IMPORTED G5 MATERIAL IS ONLY NECESSARY IF  
CURRENT SOIL CONDITIONS ARE NOT COMPETENT
8. FLOOR TO BE FINISHED WITH DRY SHAKE GREY  
NON-METALLIC FLOOR HARDNER. FLOOR TO BE POWER  
FLOATED
- 9.RIP IN-SITU AND REMOVE BOULDERS, COMPACT IT TO  
90% MDD@OMC

REV	REVISION DESCRIPTION			DRAWN	CHKD	AUTH	DATE	0.54/	REFERENCE DRAWINGS
APPROVED BY		 Eskom				Eskom Holdings SOC Ltd Reg No 2002/015527/30			
DATE									
CHECKED BY		Zandspruit Radio Station Container Plinth							
MVUWO MAKHUVHA									
DATE									
DRAWN BY									
NELSON SHANDU		©							
DATE 17-09-2025									
SCALE 1:100		Zand23P01-SE-D65				SHEET NUMBER		REVISION	
						1		0	